



**MINISTRY  
VENUES**







# CONTENTS

- 01 — INTRODUCTION
- 02 — SPACES
- 03 — DIMENSIONS
- 04 — FIND US
- 05 — CONTACT



# WELCOME

Remarkable Spaces.  
Exceptional Events.

We are Ministry Venues. Since 1991, we've been hosting events that leave a lasting impression. We're ready to welcome you to one of our three sites across central London: each a blank canvas boasting an array of spaces where your vision can come to life.

Our specialist team possess the energy and expertise to ensure things run smoothly from start to finish, no matter the shape or scale of the occasion – from conferences to catwalk shows, work meets to weddings. Ministry Venues is where three decades of industry heritage and euphoric history collide to create experiences your guests will never forget.





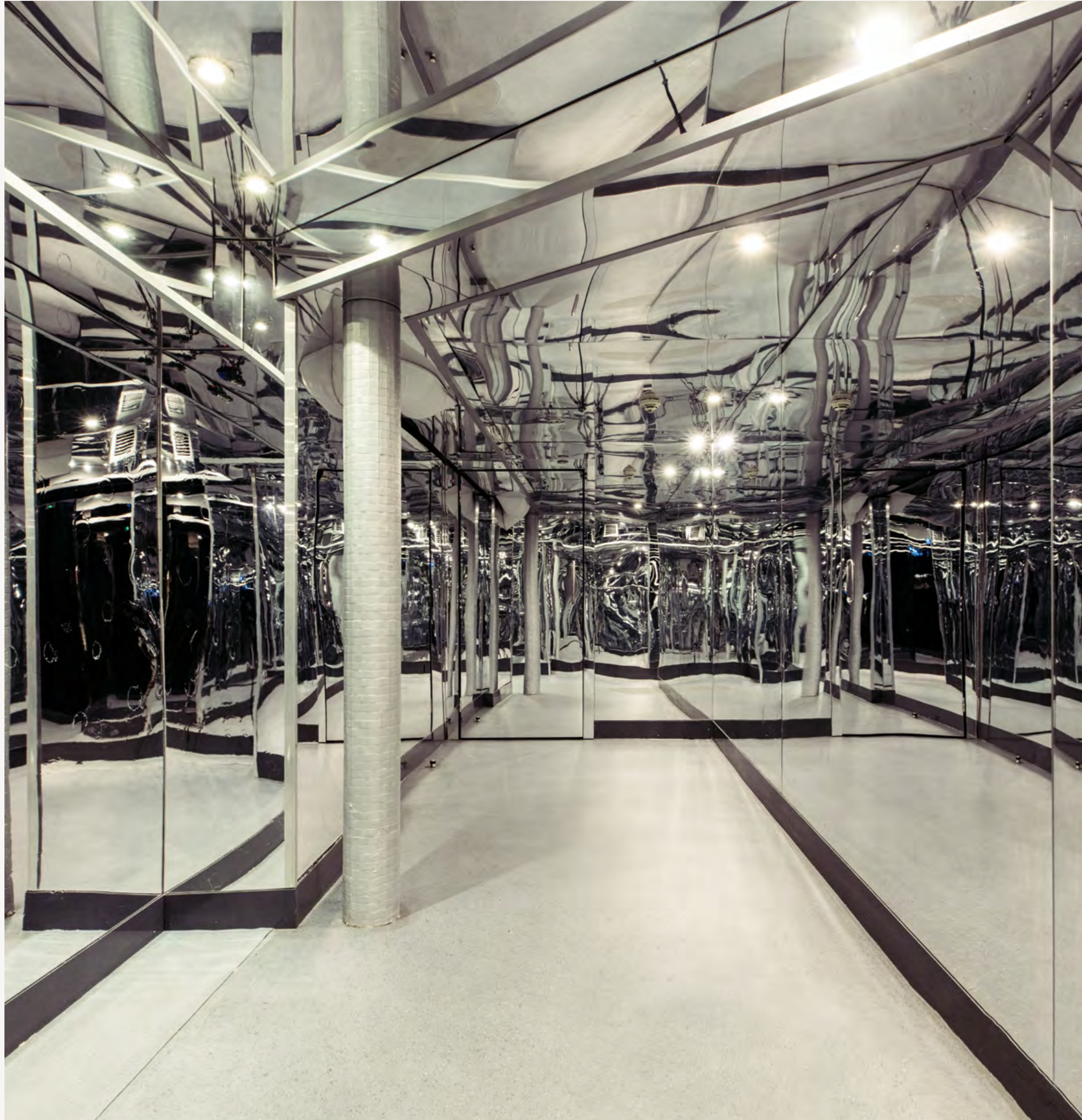
# MINISTRY OF SOUND



Ministry of Sound is the legendary central London night club that has defined youth culture for generations. Boasting six interconnected industrial spaces spread across 900 square metres just south of the Thames, Ministry of Sound has a total capacity of 1,555 and a 24-hour licence.

With an additional 330 square metres outside in the courtyard, the club can handle pretty much anything – from awards ceremonies to conferences, Christmas parties to catwalk shows – and is a dream large-scale hire venue for corporates, agencies and brands alike.





Opened in 1991, the once disused bus garage retains its industrial heritage with exposed brick walls and steel beams, amplified by atmospheric lighting and powerful sound installations. Want an event to get tongues wagging? Hold it at a nightlife institution steeped in 30 years of history.



# SPACES

- THE 103
- THE BOX
- THE BABY BOX
- THE LOFT
- THE LOUNGE
- THE COURTYARD



THE 103





## THE 103

Named after the street on which the venue is located, The 103 is the central chamber that welcomes guests into Ministry of Sound and connects all 6 of our industrial spaces.

Complemented by an aerial walkway that overlooks the room, a glittering disco ball and towering double-height ceilings, the ground floor's focal point is a 12-metre bar backed up by a giant wall-to-wall LED screen, a setup that offers all kinds of branding opportunities.



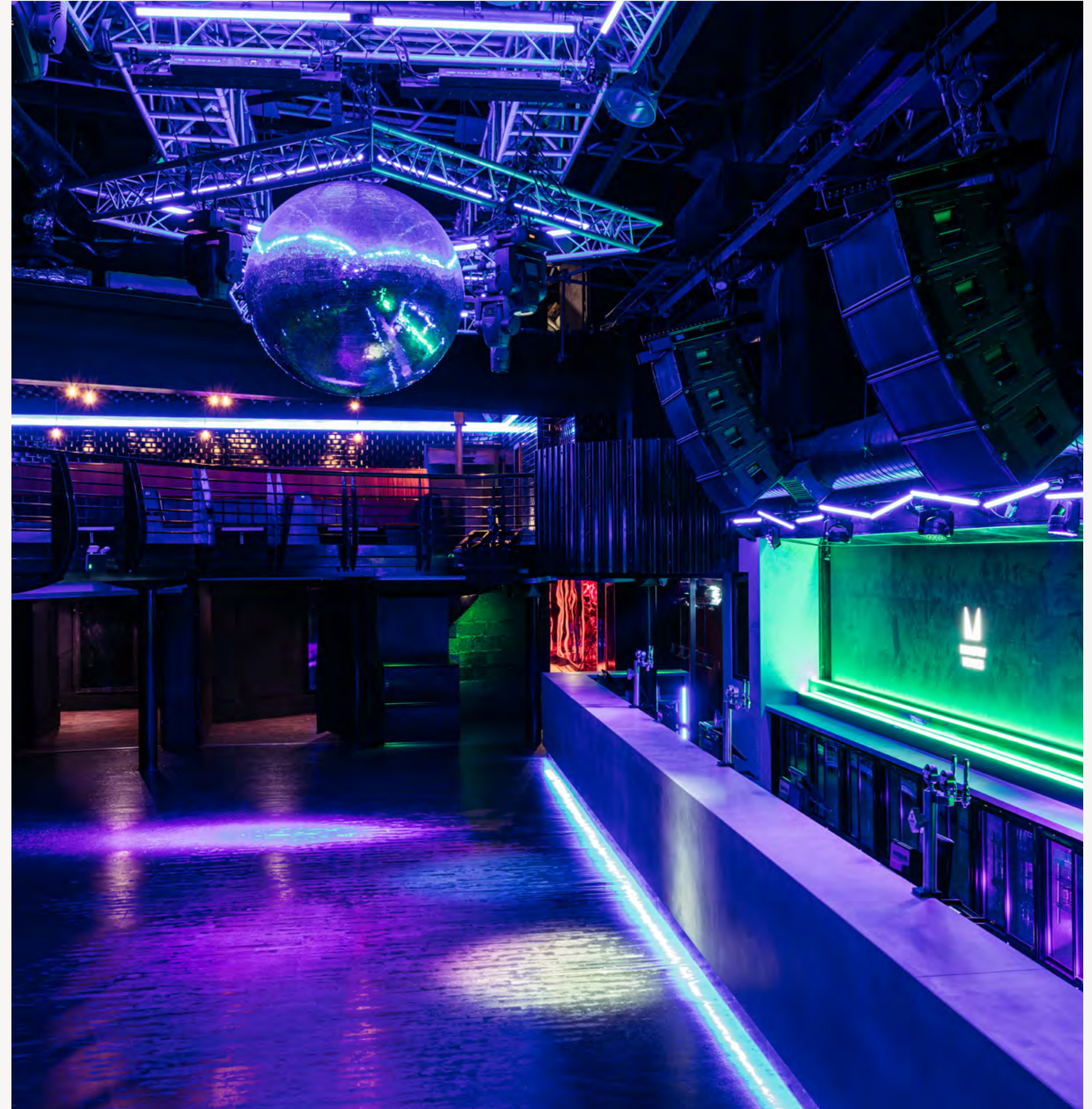




Holding a capacity of 500 across its 285 square metres, the space is suited to all kinds of events – from corporate parties, standing receptions and product launches, to fitness jamborees and fashion shows.



- 150 Theatre
- 600 Standing
- 110 Banquet
- 283 m<sup>2</sup>





THE BOX





## THE BOX

Simply put, The Box is one of the most revered club spaces in the world. The largest room you can hire through Ministry Venues: a main plenary and jewel-in-the-crown that holds 600 standing, 300 theatre-style, across 285 square metres.

The Box was built for peerless sound quality, making it ideal for keynote addresses, performances, networking events and awards ceremonies, while the balcony overlooking the sprung wooden main floor works perfectly as a separate green room space for special guest speakers and VIPs.







With top drawer insulation and an LED display wall primed for key branding opportunities, this show-stopping blank canvas is ideal for your next corporate party, right in the heart of London.





- 300 Theatre
- 565 Standing
- 170 Banquet
- 285 m<sup>2</sup>





THE BABY BOX





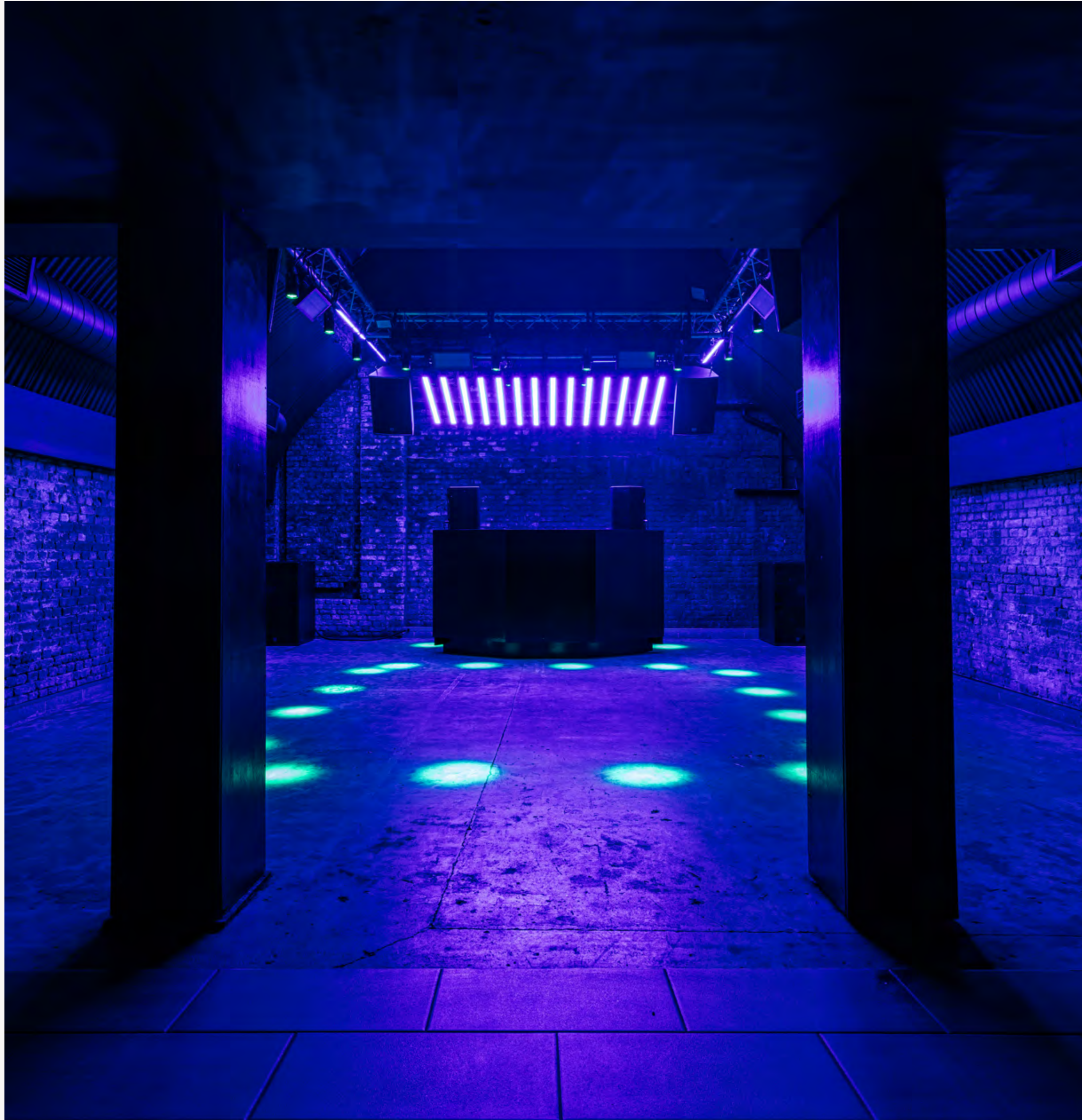
## THE BABY BOX

Tucked away to the side of The 103, you'll find our beloved Baby Box. The smallest space at Ministry of Sound can accommodate 120 standing, while its position away from the hubbub of the main rooms make it perfect for intimate, small-sided group sessions from conferences.

The sense of space is amplified by high ceilings, exposed brickwork and excellent AV facilities, the latter served by a 3-phase power supply and extra sockets that make it ideal for use as an in-house kitchen and catering zone. The Baby Box is often the operational star of the show, the ideal hub for events that need that little bit more.







- 50 Theatre
- 120 Standing
- 76 m<sup>2</sup>



THE LOFT





## THE LOFT

Situated up on our first floor, The Loft represents an ideal chance to add something special to your event. Its location away from the main areas – it's also more private than The Lounge and Baby Box – makes it perfect for intimate one-on-ones, press briefings, or as a space for guests to engage with interactive tech, like product prototypes or gaming consoles.

The Loft's high ceilings, large, fitted bar, standing capacity of 150 and formidable sound system make it a great social space, too. This flexibility is further amplified by customisable lighting and whatever seating solution you wish to deploy across its 108 square metres.







- 70 Theatre
- 150 Standing
- 108m<sup>2</sup>



THE LOUNGE



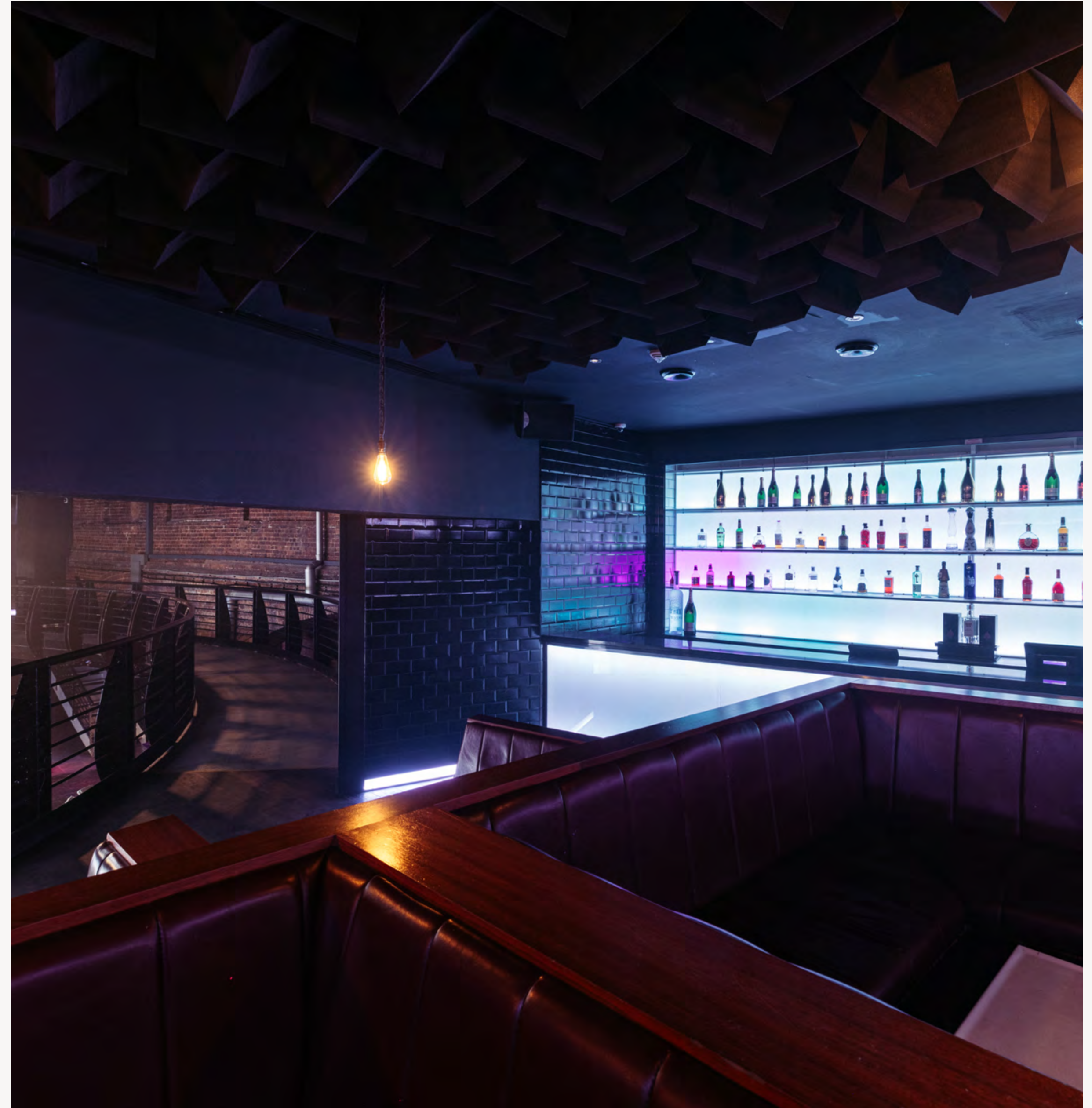


## THE LOUNGE

- 120 Standing
- 85 Seated
- 123m<sup>2</sup>

Whilst The Lounge offers the best possible views of our main room, The Box and centre space, The 103, it's fitted booth seating, dedicated bar and WCs, allow it to shine on its own.

It's an evocative, atmospheric space and makes a great green room, 1-on-1 meeting zone or breakout area, holding a standing capacity of 120 across its 123 square metres.





THE COURTYARD





## THE COURTYARD

The Courtyard is one of the most important spaces at Ministry of Sound. It's the first thing your guests will see when they arrive at the venue, where they will congregate to network away from the main event and the last space they'll walk through when they leave.

It's an ideal setup space for street food vans and catering, while large LED screens and customisable lighting rigs provide a plethora of branding opportunities – allowing you to truly 'own' the space.







- 400 Standing
- 330m<sup>2</sup>



# FIND US

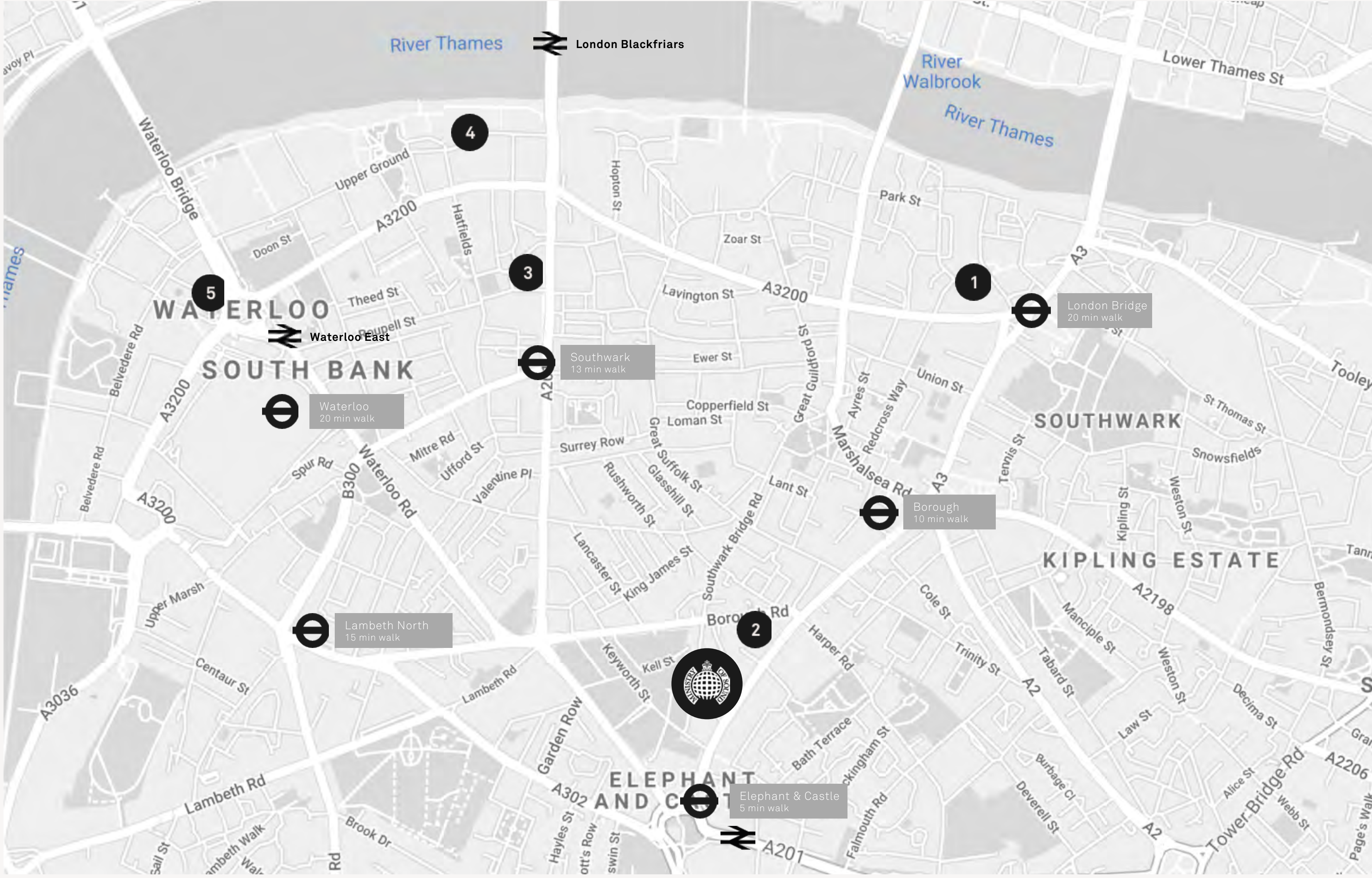
- 1 **Borough Market**
- 2 **The Ministry**
- 3 **The Hoxton Hotel**
- 4 **Sea Containers**
- 5 **BFI Southbank**

**Public Transport**

- Cannon Street → 15 min
- Liverpool Street → 20 min
- Bond Street → 23 min
- King's Cross → 35 min

**Areas**

- Bank → 15 min
- Southwark → 20min
- Clerkenwell → 20min
- Canary Wharf → 25 min





# DIMENSIONS

- CAPACITIES
- FLOOR PLANS

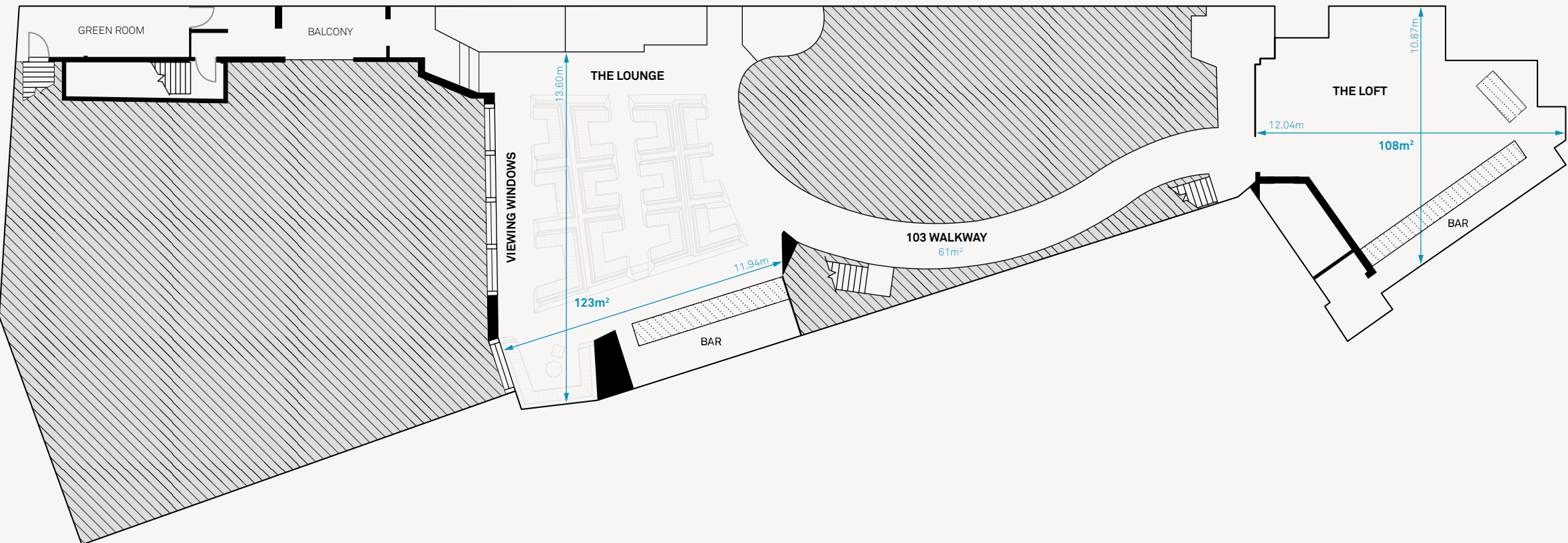


# CAPACITIES

Key Information			Area - Ft <sup>2</sup>	Area - M <sup>2</sup>	Standing	Theatre	Dinner
Maximum Capacity	1555	The 103	3046	283	550	150	110
Maximum Space	1200 m <sup>2</sup>	The Box	3068	285	565	300	170
Power	3-Phase	The Baby Box	818	76	120	50	—
License	24 Hours	The Loft	1163	108	200	70	—
		The Lounge	1324	123	120	—	—
		The Courtyard	3563	331	400	—	—



# FLOOR PLANS







**MINISTRY  
VENUES**

103 Gaunt Street  
London  
SE1 6DP

MinistryVenues.com  
Events@MinistryVenues.com  
02077408682

@MinistryVenues